



PROGRESSIVE
PROFITABLE
PRINTING



HP DESIGNJET L26500

Printer series

Expand your offerings with fast and easy turnarounds.

Unrivaled application versatility¹.

Meet a wider range of customer needs with high-quality, outdoor and indoor applications. Produce high-impact POP displays, soft signage², bus shelters, vehicle graphics, and more.

- Print on a broad range of materials, including vinyl, fabrics², paper, film, and low-cost uncoated options.
- Seize your share of the growing soft signage market with the ability to print on a broader range of fabrics².
- Meet client needs for sharp, vivid indoor and outdoor signs—from retail ad campaigns to interior decoration.
- Create long-lasting outdoor signage with better durability than eco-solvent inks³.

Easy, convenient printing.

Get the right print the first time—including highly accurate double-sided jobs⁴. HP Latex Inks and HP Thermal Inkjet technology automate processes and maintenance, and deliver consistent prints that are ready to finish immediately.

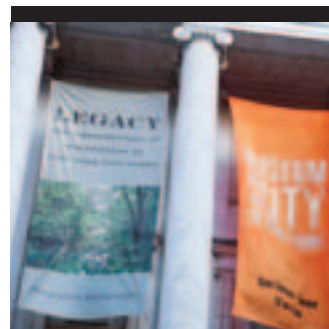
- Enjoy an extremely short time to delivery—prints are dry and ready to finish or use immediately.

- Make double-sided prints⁴ with automated registration across sides that move immediately to finishing.
- Take advantage of increased uptime that comes from automatic, reliable, low-maintenance printing.
- Use proactive alerts and accurate cost reporting to minimize interruptions and provide price quotes.

Win new business from environment-minded customers.

Win business with high quality and durability on a range of media, without many of the health and safety considerations of eco-solvent inks. Offer recyclable HP media⁵, highlight a range of environmental certifications, recycle your HP supplies⁶.

- Attract environmentally conscious customers using HP Latex Inks and recyclable HP printing materials⁵.
- Improve the work environment—no special ventilation⁷, no hazard warning label—unlike most eco-solvent inks.
- Return and recycle supplies for free⁶ and dramatically improve ink efficiency⁸.
- Choose a printing system that is an industry leader in environmental certifications and awards.



ecoHIGHLIGHTS

- **Water-based HP Latex Inks—no special ventilation required¹, no hazard warning labels, no HAPs²**
- **Produce odorless prints³**
- **Create prints on FSC®-certified HP wall paper that are GREENGUARD Children & Schools CertifiedSM and meet AgBB criteria⁴**
- **Reduce your impact—print using a range of recyclable HP media, recycle all printing supplies⁵**
- **Eco Mark-Certified ink cartridges⁶**

¹ Special ventilation is not required to meet U.S. OSHA requirements on occupational exposure to VOCs from HP Latex Inks. Special ventilation equipment installation is at the discretion of the customer—no specific HP recommendation is intended. Customers should consult state and local requirements and regulations.

² Contains no detected Hazardous Air Pollutants according to EPA Method 311.

³ Some substrates may have inherent odor.

⁴ HP PVC-free Wall Paper printed with HP Latex Inks is GREENGUARD Children & Schools CertifiedSM and meets AgBB criteria for health-related evaluation of VOC emissions of indoor building products.

⁵ Visit www.hp.com/recycle to see how to participate and for HP Planet Partners program features and availability; program may not be available in your area.

⁶ HP 792 Latex Designjet Ink Cartridges, certification number 11 142 004 by the Eco Mark Office of Japan Environment Association.



Eco Mark Certification
Number 11142004



Please recycle large-format printing hardware and printing supplies. Find out how at our website:

www.hp.com/ecosolutions

HP Designjet L26500 Printer Series

Vast improvement in double-sided printing.

- The double-sided capability⁴ allows you to print double-sided banners with minimal operator intervention. The HP Optical Media Advance Sensor (OMAS) controls registration automatically.
- You can also save time—no need to rewind the roll between sides.

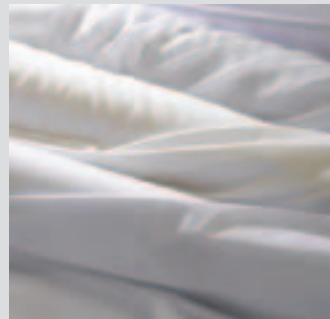


More textiles and higher quality.

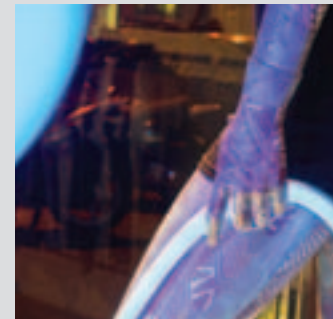
61-in (155-cm) rolls fully supported. Now you have access to many more of the fabric rolls available in the market.



Maximize the variety of media you can handle, including soft materials previously too light to load.



Even higher image quality with the new front tension system and edge holders.



HP Latex Printing Technologies

HP Latex Inks are water-based inks that combine the best characteristics of eco-solvent inks and water-based inks. You can obtain the outdoor durability and versatility on low-cost, uncoated papers that you would traditionally associate with eco-solvent inks, together with the odorless prints⁹, low maintenance, and environmental advantages you get from water-based inks.

HP Latex Inks are completely cured inside the printer to form a durable film on the print medium. Prints come off dry so you can move right on to lamination, finishing, shipping, or display.



POINT OF PURCHASE POSTERS

Reduce costs without compromising quality.

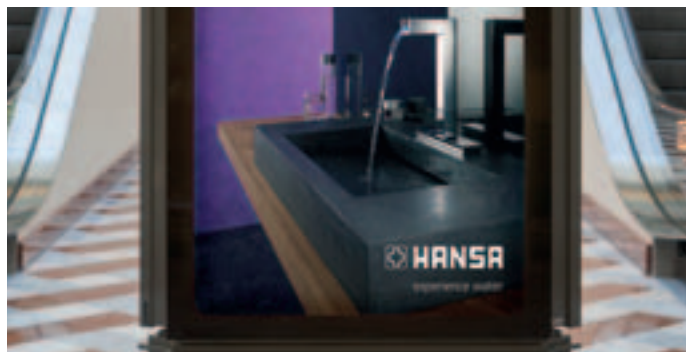
- Print on low-cost uncoated papers – with HP Latex Inks, you can print on uncoated papers, and reduce your media costs by up to 30%. Solvent printers require more expensive coated papers to achieve the same results.
- Achieve excellent image quality – produce prints with high resolution up to 1200 dpi, wide gamut, and saturated colors suitable for both long and short-distance viewing.



WALL COVERINGS

Discover a new market opportunity.

- Create odorless prints⁹ – prints produced with HP Latex Inks are odorless, making them ideal for any location where odor is a concern. Great news for wall coverings and wall papers, which cover a large surface, and where any odor would be immediately noticeable.
- Print with HP Latex Inks on HP PVC-free Wall Paper and offer indoor wall decorations that are GREENGUARD Children & Schools CertifiedSM¹⁰ and meet AgBB criteria for health-related evaluation of VOC emissions of indoor building products¹¹. This HP wall paper is also FSC[®] certified, signifying that this media supports the development of responsible forest management worldwide.



LIGHT BOXES

Deliver vibrant, saturated colors at a high productivity rate.

- Achieve excellent image quality – produce high-resolution prints up to 1200 dpi, with dense, saturated colors that stand up to close inspection.
- Eliminate drying time – prints are fully dried inside the printer, allowing you to deliver immediately. With water-based, solvent, or Lambda technologies, you need to leave prints to fully dry before packing or mounting.



VEHICLE WRAPS AND GRAPHICS

Cut turnaround times, access high-value market segments.

- You can laminate right after printing – there is no need to let prints dry after printing, so you can accept urgent-turnaround jobs that can command a premium price.
- Enjoy excellent flexibility and conformability – HP Latex Inks stretch with the vinyl during mounting without cracking.
- Benefit from performance warranties from HP, 3M, and Avery Graphics. Produce vehicle wraps with HP Latex Inks that outperform eco-solvent inks³. HP is the only company that offers and warrants the entire printing system for vehicle wraps¹² with the HP Performance Warranty for HP Air Release Adhesive Gloss Cast Vinyl and HP Clear Gloss Cast Overlaminate¹³.



SOFT SIGNAGE¹²

Complement your business without losing versatility.

- Print on lower-cost uncoated fabrics¹² – with HP Latex Inks, you can print on uncoated fabrics with excellent image sharpness, and save up to 30% on substrate costs. Solvent printers require more expensive coated fabrics to achieve the same image quality results.
- Print direct to fabric – with HP Latex Inks, you can print directly onto the fabric in a simple, one-step process. Dye sublimation printing requires additional dye transfer equipment, transfer paper, and a more complex two-step process.



OUTDOOR AND EVENT BANNERS

Differentiate your business.

- Produce images worthy of building the best brands – see rich blacks and glossy results on self-adhesive vinyls and banners. Create outdoor signage with overall durability that's even better than prints produced with eco-solvent inks³. See outdoor display permanence up to three years unlaminate¹³, five years laminated¹³.
- Distinguish your business – print with a combination of HP Latex Inks and PVC alternative substrates and offer a complete solution, designed with the environment in mind, to distinguish your business in a very competitive market. HP HDPE Double-sided Reinforced Banner is a lightweight, recyclable¹⁵ alternative to PVC scrim banner.

HP DESIGNJET L26500 PRINTER SERIES

TECHNICAL SPECIFICATIONS

PRINT SPEED¹⁴	
	Up to 22.8 m ² /hr (246 ft ² /hr)
MEDIA	
Handling	Roll feed, take-up reel, automatic cutter (for vinyl, paper-based media, backlit polyester film, and thin banners)
Types	Banners, vinyls, films, fabrics, papers, mesh (liner used with porous media)
Size	58 to 155-cm (23 to 61-in) rolls, up to 40 kg (88 lb)
Roll diameter	Up to 18-cm (7.1-in) outside diameter
Thickness	Up to 0.5-mm (19.7 mil)
PRINTING MODES¹⁴	
4-pass bidirectional	22.8 m ² /hr (246 ft ² /hr)
6-pass bidirectional	16.5 m ² /hr (178 ft ² /hr)
8-pass bidirectional	10.6 m ² /hr (114 ft ² /hr)
10-pass bidirectional	9.0 m ² /hr (97 ft ² /hr)
12-pass bidirectional	7.6 m ² /hr (81 ft ² /hr)
16-pass bidirectional	6.3 m ² /hr (68 ft ² /hr)
PRINTING	
Print resolution	1200 x 1200 dpi
Margins (top x bottom x left x right)	5 x 5 x 5 x 5-mm (0.2 x 0.2 x 0.2 x 0.2-in)
Technology	HP Thermal Inkjet
Ink types	HP Latex Inks
Ink colors	Cyan, magenta, yellow, black, light cyan, light magenta
Ink drop	12 pl
Ink cartridge size	775-ml
Printheads	6 (2 x yellow/black, 2 x cyan/light cyan, 2 x light magenta/magenta)
Nozzles	2112 per printhead (2 colors per printhead, 1056 nozzles per color)
Maximum print length	No physical limit (determined by RIP software or media roll length) ¹⁵
CONNECTIVITY	
Interfaces (standard)	Gigabit Ethernet (1000Base-T)
DIMENSIONS (W X D X H)	
Printer	2465 x 690 x 1370-mm (97 x 27.5 x 54-in)
Shipping	2690 x 815 x 1200-mm (105.9 x 32.1 x 47.2-in)
WEIGHT	
Printer	202 kg (445 lb)
Shipping	291 kg (642 lb)
WHAT'S IN THE BOX	
	HP DesignJet L26500 Printer, printheads, printhead cleaning kit, ink maintenance kit, cleaning container, Original HP sample media, printer stand, take-up reel, loading accessory, edge holder, waste management diverter, user maintenance kit, maintenance guide, setup poster, documentation software, power cords
ENVIRONMENTAL RANGES	
Operating temperature	15 to 30°C (59 to 86°F)
Storage temperature	-25 to 55°C (-13 to 131°F)
Operating humidity	30 to 80% RH (non-condensing)
ACOUSTIC	
Sound pressure, active	57 dB(A)
Sound pressure, standby	49.5 dB(A)
Sound power, active	7.5 B(A)
Sound power, standby	5.5 B(A)
POWER CONSUMPTION	
Maximum	4.8 kW maximum (only when warming up)
Active	2.7 kW
Powersave	50 watts
Off	0.4 watts
Power requirements	Worldwide model: Input voltage (auto ranging): 220 to 240 VAC (10% +6%), 50/60 Hz (+/- 3 Hz), 15 A max per power cord Japan model: Input voltage: 200 VAC (10% +10%), 50/60 Hz (+/- 3 Hz), 15 A max per power cord
CERTIFICATION	
Safety	USA and Canada (CSA certified), EU (LVD and EN 60950-1 compliant), Russia (GOST), China (CCC)
Electromagnetic	Compliant with Class A requirements, including: USA (FCC rules), Canada (ICES), EU (EMC Directive), Australia (ACMA), New Zealand (RSM), China (CCC), Japan (VCCI), Korea (KCC)
Environmental	WEEE, EU RoHS, China RoHS, REACH, EuP, F EMP
ENERGY STAR[®] qualified models	See: www.hp.com/go/energystar
WARRANTY	
	One-year limited hardware warranty, 8-hour, 5 days a week phone support




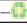


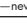





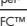


For more information, please visit:
www.hp.com/go/DesignjetL26500

For more HP large-format printing materials and sizes please visit us online at:
www.hp.com/go/LFPrintingMaterials

Software: For HP Certified third-party RIP solutions, please visit us online at:
www.hp.com/go/L26500/solutions

See Site Preparation Guide requirements to ensure complete compliance with all installation and operation requirements, safety procedures, warnings, cautions, and local regulations. Download this and other manuals from:
www.hp.com/go/L26500/manuals

ORDERING INFORMATION

PRODUCT	
CQ869A	HP DesignJet L26500 61-in Printer
CR030A	HP DesignJet L26500 61-in Japan Printer
ACCESSORIES	
CV063A	HP DesignJet L26500 (61-in Printer) 2-in Spindle
CV135A	HP DesignJet L26500 (61-in Printer) 3-in Spindle
CR765A	HP DesignJet 61-in Media Loading Accessory
CQ201A	HP DesignJet L2x500 User Maintenance Kit
ORIGINAL HP PRINTHEADS	
CN702A	HP 792 Yellow/Black DesignJet Printhead
CN703A	HP 792 Cyan/Light Cyan DesignJet Printhead
CN704A	HP 792 Light Magenta/Magenta DesignJet Printhead
ORIGINAL HP INK CARTRIDGES	
CN705A	HP 792 775-ml Black Latex DesignJet Ink Cartridge
CN706A	HP 792 775-ml Cyan Latex DesignJet Ink Cartridge
CN707A	HP 792 775-ml Magenta Latex DesignJet Ink Cartridge
CN708A	HP 792 775-ml Yellow Latex DesignJet Ink Cartridge
CN709A	HP 792 775-ml Light Cyan Latex DesignJet Ink Cartridge
CN710A	HP 792 775-ml Light Magenta Latex DesignJet Ink Cartridge
ORIGINAL HP MAINTENANCE SUPPLIES	
CR278A	HP 792 DesignJet Printhead Cleaning Kit
CR279A	HP 792 DesignJet Ink Maintenance Kit
CH622A	HP 789/792 DesignJet Printhead Cleaning Container
ORIGINAL HP PRINTING MATERIALS	
Banners	
	HP HDPE Reinforced Banner—new, 
	HP Double-sided HDPE Reinforced Banner—new, 
	HP Durable Frontlit Scrim Banner
	HP Durable Semi-gloss Display Film ¹⁶
	HP Everyday Matte Polypropylene, 2-pack ¹⁶ — 
Self-adhesive Materials	
	HP Air Release Adhesive Gloss Cast Vinyl
	HP One-view Perforated Adhesive Window Vinyl
	HP Permanent Gloss Adhesive Vinyl
	HP Permanent Matte Adhesive Vinyl
	HP Everyday Adhesive Matte Polypropylene ¹⁶
Films	
	HP Backlit Polyester Film— 
Polyester fabrics	
	HP Heavy Textile Banner— 
	HP Light Textile Display Banner— 
Papers/photographic papers	
	HP PVC-free Wall Paper—new, FSC [®] certified, GREENGUARD Certified ^{3M 10}
	HP White Satin Poster Paper— 
	HP Photo-realistic Poster Paper— 
	HP Blue Back Billboard Paper
	HP Coated Paper ¹⁶ —PEFC [™] certified, 
	HP Universal Coated Paper ¹⁶ —FSC [®] certified, 
	HP Universal Heavyweight Coated Paper ¹⁶ —FSC [®] certified, 
	HP Heavyweight Coated Paper ¹⁶ —PEFC [™] certified, 
	HP Universal Bond Paper ¹⁶ —FSC [®] certified, 
	HP Super Heavyweight Plus Matte Paper ¹⁶ — 
Specialty materials	
	HP DuPont [™] Tyvek [®] Banner— 
	HP Satin Canvas
	HP Collector Satin Canvas ¹⁶
SERVICE AND SUPPORT	
HZ644E	HP 3 year Next business day DesignJet L26500 61-in Hardware Support
HZ645E	HP 3 year 4 hour 13x5 DesignJet L26500 61-in Hardware Support
HZ660PE	HP 1 year Post warranty Next business day DesignJet L26500 61-in Hardware Support
HZ661PE	HP 1 year Post warranty 4 hour 13x5 DesignJet L26500 61-in Hardware Support

- The HP DesignJet L26500 Printer produces an extremely broad range of both outdoor and indoor applications from a single device, which surpasses the number of different applications that traditional eco-solvent printers or water-based printers can produce.
- For best results, print on media that does not let the ink trespass onto the printer. Performance may vary depending on media. Please consult your media supplier for compatibility details.
- Durability comparison based on testing of representative eco-solvent inks including eco-sol Max inks on Avery SA vinyl for display permanence and scratch, rub/abrasion, and chemical resistance. HP image permanence and scratch, smudge, and water resistance estimates by HP Image Permanence Lab on a range of media including HP printing materials. See www.hp.com/go/supplies/printpermanence
- For best results use media options intended for double-sided printing.
- HP Large-format Media take-back program availability varies. Some recyclable HP papers can be recycled through commonly available recycling programs. Recycling programs may not exist in your area. See www.hp.com/recycle for details.
- Visit www.hp.com/recycle to see how to participate and for HP Planet Partners program availability; program may not be available in your area. Where this program is not available, consult the Material Safety Data Sheet (MSDS) available at www.hp.com/go/ecodata to determine appropriate disposal.
- Special ventilation is not required to meet U.S. OSHA requirements on occupational exposure to VOCs from HP Latex inks. Special ventilation equipment installation is at the discretion of the customer—no specific HP recommendation is intended. Customers should consult state and local requirements and regulations.
- Per internal HP testing based on the amount of ink used during the recommended ink maintenance routines comparing the HP Latex Ink printing system to certain eco-solvent ink systems.
- Some substrates may have inherent odor.
- HP PVC-free Wall Paper printed with HP Latex Inks is GREENGUARD Children & Schools Certified.^{3M} See www.greenguard.org
- HP PVC-free Wall Paper printed with HP Latex Inks meets AgBB criteria for health-related evaluation of VOC emissions of indoor building products. See www.umweltbundesamt.de/produkte-e/bauprodukte/agbb.htm
- The HP printer is subject to the HP hardware warranty.
- Some warranty limitations apply, see the HP Performance Warranty for HP Air Release Adhesive Gloss Cast Vinyl at www.hp.com/go/HPMediaWarranties
- Speed based on printing using full-width 155 cm/61 in.
- Recommended up to 30 m (100 ft).
- Requires purchase of 2-inch spindle.

